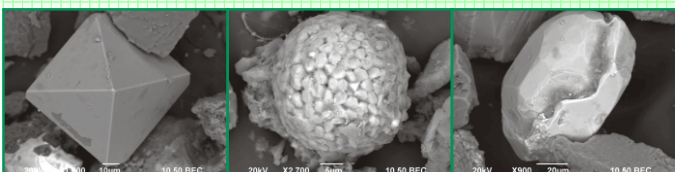
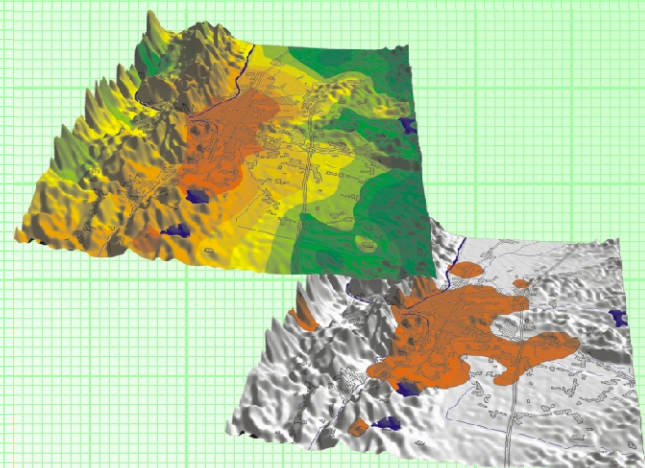
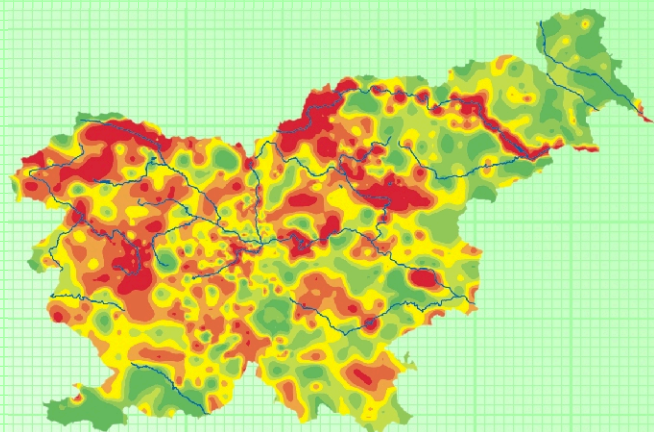
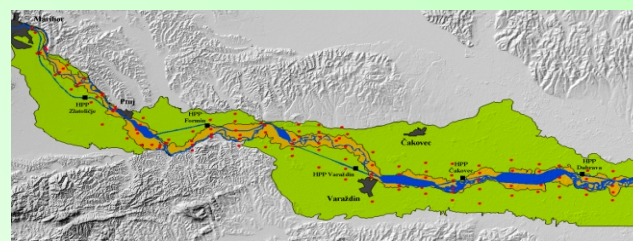


Workshop topics and goals

The aim of the workshop is provide a basis for further networking in the area of South East Europe and EU countries by presenting achievements of previous projects and themes lead by the team of GeoZS. This is not only a great opportunity for representing our work, but also to gain knowledge from other participating countries in this field but also strengthening the international cooperation networking and partnership between South East Europe and EU.

This workshop considers quite wide environmental problematic influenced by the human activities. Presentations that consider topics focused on the assessment and monitoring of human impacts in the West Balkan, SE Europe and EU regions, as well as on the methods used, are welcomed. An overview of the previously obtained results and new potentially problematic fields will help us to exchange and apply knowledge and also to improve the methods used in the modern environmental sciences.



In the frame of 7th Framework Programme RESTCA (Reinforcing S&T Capacities of Two Emerging Research Centers for Natural and Industrial Pollutant Materials in Serbia and Slovenia), the Geological Survey of Slovenia is organizing a workshop:

Applied Environmental Geochemistry - Anthropogenic impact on the human environment in the SE Europe

October, 6-9, 2009

Organizer:
Geological Survey of Slovenia

Workshop venue:
Geological Survey of Slovenia
Dimiceva ulica 14, 1000 Ljubljana

PROGRAMME COMMITTEE:

Prof. Dr. Vladica Cvetković, University of Belgrade Faculty of Mining and Geology
Dr. Robert Šajn, Geological Survey of Slovenia
Dr. Gorazd Žibret, Geological Survey of Slovenia
MSc. Jasminka Alijagić, Geological Survey of Slovenia



WORKSHOP PROGRAMME

Tuesday: 6.10.2009

- 10:00 **Welcome note**
- 10:10 **CVETKOVIĆ, V., ŠARIĆ, K. & ERIĆ, S.:** REGPOT-3 204374: Reinforcing S&T Capacities of Two Emerging Research Centres for Natural and Industrial Pollutant Materials in Serbia and Slovenia main philosophy and status praesens
- 10:30 **ALIJAGIĆ, J. & ŠAJN, R.:** EU 7th Framework Program Presentation (RESTCA-TERCE-NIMPSS) Slovenian activities and cooperation of GeoZS in geochemical investigation in former Yugoslavia
- 10:50 **LAZAROV, M., GERDES, A., HÖFER, H., WEYER, S. & BREY, G.P.:** EU 7th Framework Program Presentation (RESTCA-TERCE-NIMPSS) German activities: Analytical methods for investigation of solid and liquid pollutants
- 11:10 **Coffee break**
- 11:30 **KOMAC, M.:** Role of geology in a contemporary society
- 11:50 **GOSAR, M. & ŠAJN, R.:** Environmental geochemistry investigations at Geological survey of Slovenia
- 12:10 **ŠINIGOJ, J.:** GIS activities in GeoZS
- 12:30 **Lunch**
- 14:00 **ROKAVEC, D.:** Exploration and exploitation of mineral raw materials in Slovenia General overview
- 14:20 **BAVEC, M. & NOVAK, M.:** Application of basic geological data in civil engineering and environmental studies
- 14:40 **KOLAR-JURKOVŠEK, T. & JURKOVŠEK, B.:** Application of paleontological and stratigraphical methods in modern science
- 15:00 **TRAJANOVA, M.:** The significance of basic mineralogical, sedimentological and petrological investigations for tracing anthropogenic impact to environment

Contact

Jasminka Alijagić
(Jasminka.aliyagic@geo-zs.si),
Robert Šajn
(robert.sajn@geo-zs.si),
Tel.: +386 1 2809 769

Wednesday: 7.10.2009

- 10:00 **STAFILOV, T., ŠAJN, R., PANČEVSKI, Z., BOEV B., FRONTASYEVA, M.V. & STRELKOVA, L.P.:** Contamination of topsoils in Veles Region, Republic of Macedonia
- 10:20 **ALIJAGIĆ, J. & ŠAJN, R.:** Influence of ironworks, mining and metallurgy on distribution of chemical elements in the Central Bosnia and Herzegovina
- 10:40 **TERŠIČ, T., GOSAR, M. & ŠAJN, R.:** Environmental impacts of historical mining activities at the Podljubelj mercury mine, NW Slovenia
- 11:00 **BUDKOVIČ, T.:** Using of archival sources for location and delineation of military pollution with heavy metals in Slovenia
- 11:20 **Coffee break**
- 11:40 **GOSAR, M. & MILER, M.:** Heavy metal in sediments influenced by the Mežica mine
- 12:00 **ĐOKIĆ, B. V. & JOVANOVIĆ, M.:** Technogenic waste dumps of metal mines in Serbia
- 12:20 **MEGLIČ, P., BAVEC, M., ŠAJN, R., PRESTOR, J. & URBANC, J.:** Hydro-geological and litho-geochemical characteristics of Slovenia for groundwater bodies characterisation
- 12:40 **FERJAN, T., BRENČIČ, M. & VREČA, P.:** Changes in isotopic composition of bottled waters due to different storage conditions
- 13:00 **Lunch**
- 14:30 **JANŽA, M.:** Use of hydrological modelling for simulation of aquifer pollution and optimization of remediation actions
- 14:50 **KRALJ, P., RYCHAGOV, S. & KRALJ, P.:** Changes in geothermal reservoir induced by overexploitation: case studies from North-East Slovenia and South Kamchatka
- 15:10 **MARKIČ, M.:** Coals in Slovenia their general geochemical features
- 15:30 **ŽIŽEK, S.:** JEOL low vacuum scanning electron microscope (LV SEM) and field emission scanning electron microscope (FEG SEM)
- 15:50 **ŽIŽEK, S.:** Oxford Instruments X MAX new silicon drifted detector (SDD) dry energy dispersive spectrometer (EDS) detector

Thursday: 8.10.2009

- 10:00 **HALAMIĆ, J., ŠORŠA, A. & PEH, Z.:** Geochemical mapping in Croatia
- 10:20 **ŠAJN, R., HALAMIĆ, J. & PEH, Z.:** Heavy metals in alluvial sediments of the Drava River
- 10:40 **TRČEK, B. & ŠAJN, R.:** Trace elements transport in the Ljubljana urban aquifer
- 11:00 **CALABRESE, S., VEDER, M., GIAMMANCO, S., ŠPEH, N., JUSTIN, B., PARELLO, F. & D'ALESSANDRO, W.:** Geochemical comparison of natural and anthropogenic metal fluxes in extreme environments: Mt. Etna volcano (Italy) and Salek Valley (Slovenia)
- 11:20 **Coffee break**
- 11:40 **VEDER, M.:** Cadmium geochemical investigation in the Šalek valley, Slovenia
- 12:00 **JORDAN, G., VAN ROMPAEY, A., SOMODY, A. & FUGEDI, U.:** Contamination transport modelling in a mining-impacted catchment. A case study for the Rečsk Copper Mines, Hungary.
- 12:20 **STAFILOV, T., PEEVA, L., NIKOV, B. & DE KONING, A.:** Industrial Hazardous Waste in the Republic of Macedonia
- 12:40 **PFLEIDERER, S., SCHEDL, A., PIRKL, H. & FRÖSCHL, H.:** Urban Geochemistry of Vienna, Austria
- 13:00 **Lunch**
- 14:30 **ZUPAN, M., LOBNIK, F., KUGONIČ, N., GRČMAN, H.:** Polluted soils near smelters and their impact on plants
- 14:50 **ŽIBRET, G.:** Use of neural networks in the geochemical data interpretation
- 15:10 **ŽIBRET, G.:** Use of neural networks in the geochemical data interpretation Demonstration
- 15:30 **TERŠIČ, T., GOSAR, M. & BIESTER, H.:** Influences of historical ore roasting sites on the mercury dispersion in surroundings of Idrija, Slovenia
- 15:50 **MILER, M. & GOSAR, M.:** Source apportionment of solid airborne particles in urban snow deposit from Ljubljana by means of SEM/EDS

Friday: 9.10.2009

- 10:00 **VELENJE:** Presentation and field trip - Pollution of Šalek Valley (lignite mine and thermo power plant)

www.rgf.bg.ac.rs/restca
www.geo-zs.si